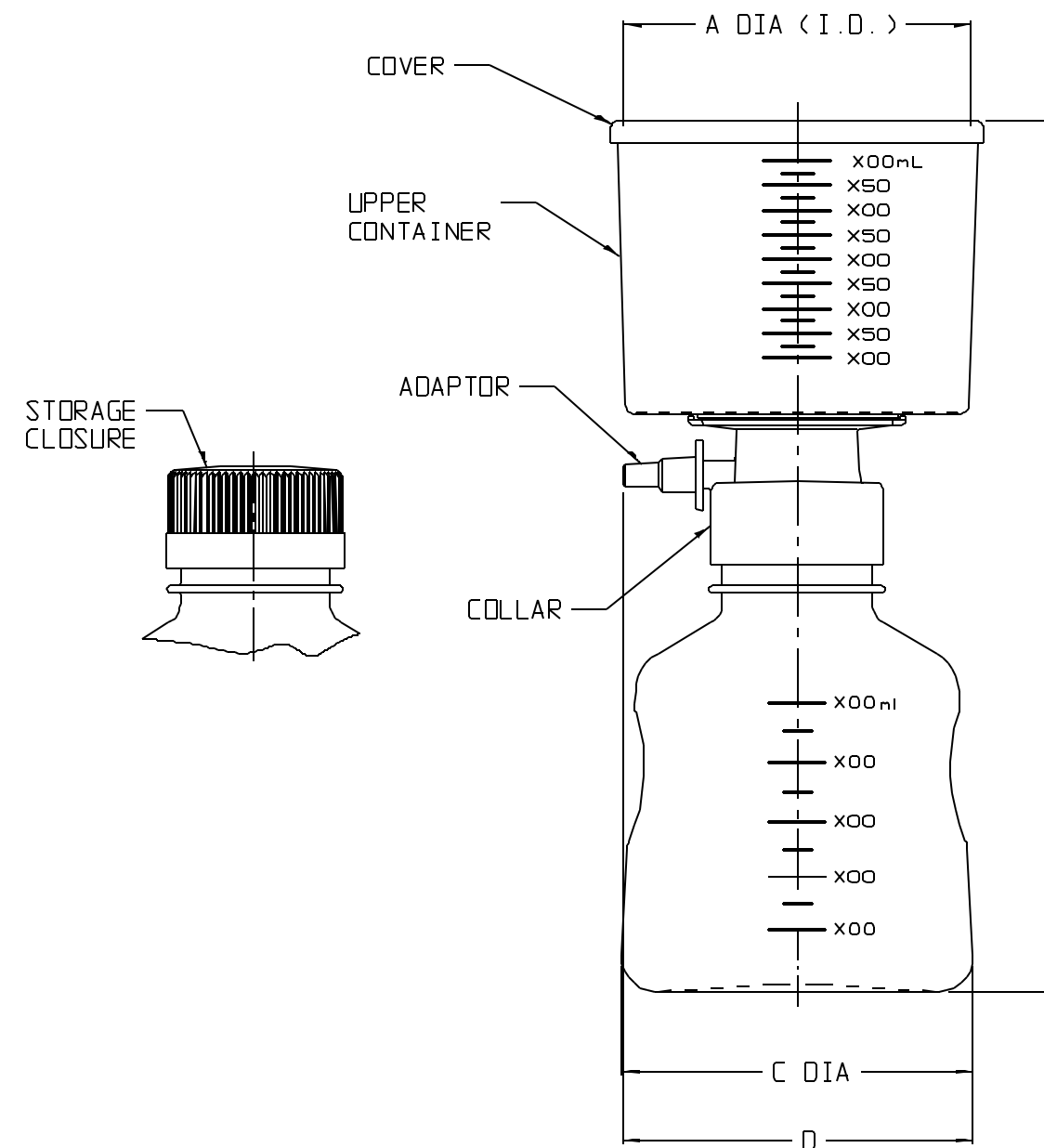


CAT. NO.....	162-0020/-0045		161-0020/-0045	
PORE SIZE (um).....	0.2/0.45		0.2/0.45	
UPPER CAP. (mL).....	500		1000	
RECEIVER CAP. (mL)...	500		1000	
MEMBRANE COLOR.....	WHITE		WHITE	
MEMBRANE DIA (mm)...	90		90	
	INCHES	MM	INCHES	MM
A (UPPER I.D.).....	3.84	97.5	4.48	113.8
B HEIGHT.....	10.7	272	12.8	325
C DIA (BASE).....	3.86	98.0	4.48	113.8
D OVERALL.....	4.0	102	4.2	106
NOM. WT. (gms).....	170		250	
MATERIALS				
UPPER CONTAINER	PS			
COVER	PS			
COLLAR	YELLOW PS			
RECEIVER	PS			
STORAGE CLOSURE	WHITE HDPE			
ADAPTOR	WHITE LDPE			
GASKET	FOAMED LDPE			
MEMBRANE	SFCA			
VENT PLUG	CA			

NOTES:

1. ALL DIMENSIONS ARE NOMINAL AND IN INCHES AND MILLIMETERS UNLESS OTHERWISE NOTED.
2. THIS IS NOT A PRODUCTION DRAWING, BUT IS FOR INFORMATIONAL PURPOSES ONLY, AND IS SUBJECT TO CHANGE WITHOUT NOTICE.



SPECS ON BACK

NOT TO SCALE

CONFIDENTIAL

THIS PRODUCT SPECIFICATION SHEET CONTAINS CONFIDENTIAL AND/OR PROPRIETARY INFORMATION AND IS TO BE USED ONLY FOR THE EXPRESSED PURPOSES AGREED UPON BY AN AUTHORIZED OFFICER OF THERMO FISHER SCIENTIFIC.

**ThermoFisher**  
SCIENTIFIC

Thermo Fisher Scientific  
75 Ponorama Creek Drive  
Rochester, NY 14625-2385, USA

MADE	MG/MC	APP'D	PVC	PSS 00-016X-XXXX-2	REV.	0699
CK'D	PVC		6/25/99			

DESCRIPTION: SERUM AND MEDIA-PLUS  
SFCA FILTER UNITS



# WolfLabs

**Pricing on any accessories shown can be found by keying the part number into the search box on our website.**

The specifications listed in this brochure are subject to change by the manufacturer and therefore cannot be guaranteed to be correct. If there are aspects of the specification that must be guaranteed, please provide these to our sales team so that details can be confirmed.

**[www.wolflabs.co.uk](http://www.wolflabs.co.uk)**

**Tel : 01759 301142**

**Fax : 01759 301143**

**[sales@wolflabs.co.uk](mailto:sales@wolflabs.co.uk)**

Please contact us if this literature doesn't answer all your questions.